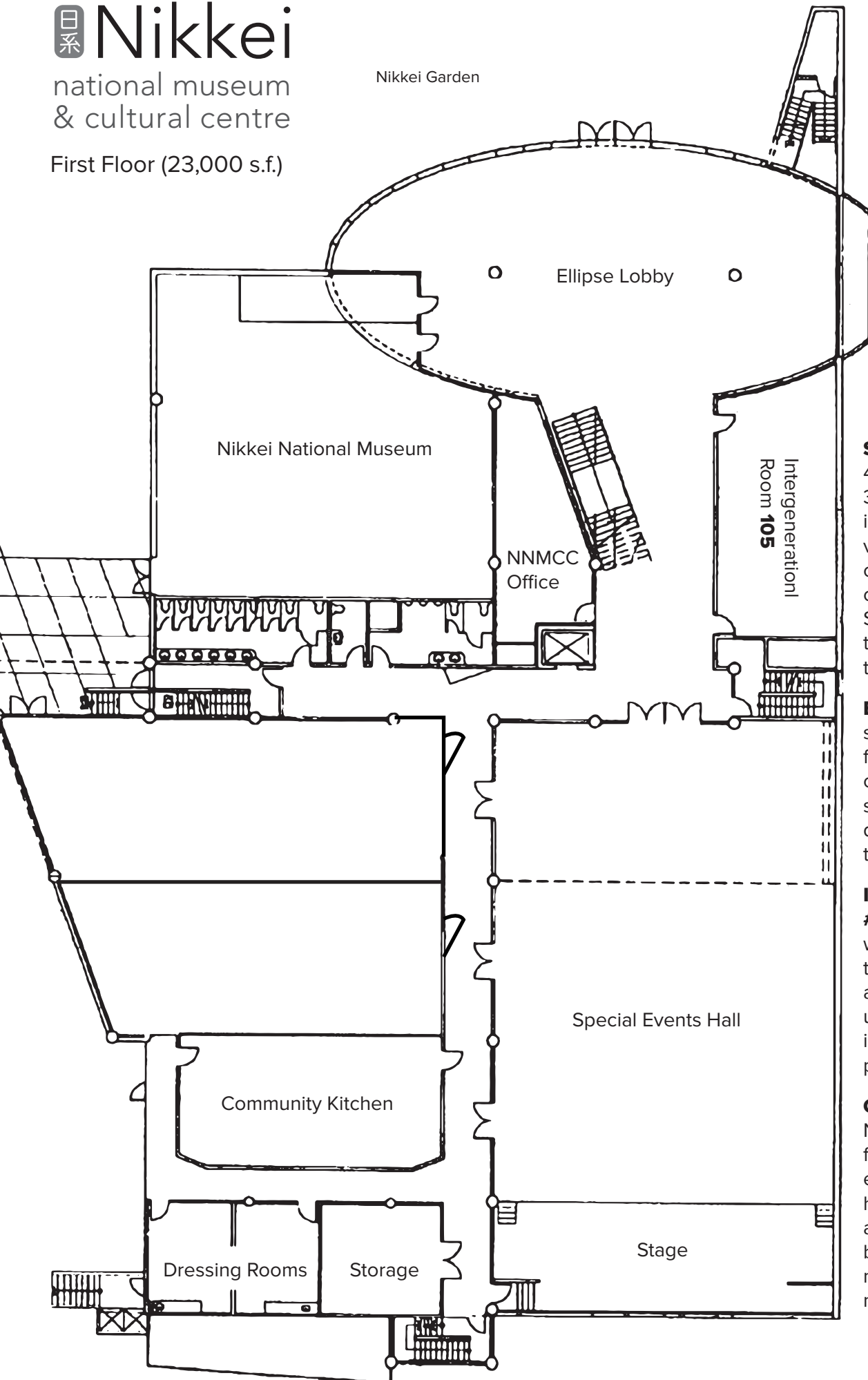


日系 Nikkei

national museum
& cultural centre

First Floor (23,000 s.f.)

Nikkei Garden



Special Events Hall:

4,500 square feet, up to 320 banquet seating, 400 in theatre style. A great venue for Banquets, Receptions, Seminars, Concerts, Community Events, Sports, Dances, Celebrations of Life, bouncy castle birthday parties

Ellipse Lobby:

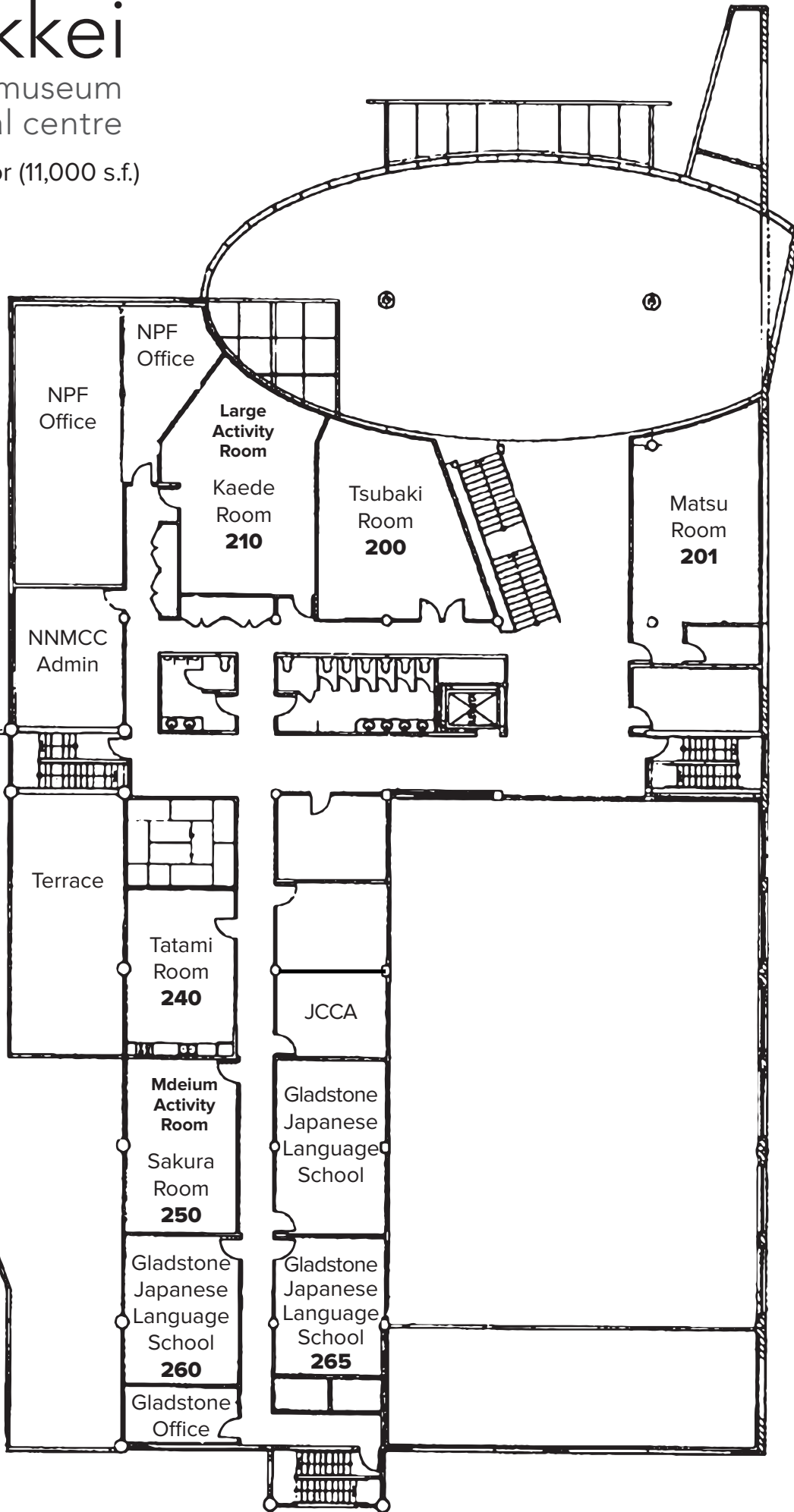
2,700 square feet, 140 seats for theatre, 120 guests comfortably for banquet seating. Great space, for displays, and or presentations.

Intergenerational Room # 105:

700 square feet w/kitchen, up to 60 in a theatre style, 30 seats for a classroom style, can be used for meetings, seminars, workshops, Lego parties

Community Kitchen:

Need to book this space for all large banquet events; the hall does not have a kitchen within it, so all catered events that are being planned for the hall need to book the community kitchen



Matsu Room 201:
650 square feet
(small kitchen inside)

Tsubaki Room 200:
620 square feet

Kaede Room 210:
670 square feet

Sakura Room 250:
440 square feet